

kobold

VK7
System



General product information

EN • 27087-04 • 0524

Contents

1	Product overview	3
2	Intended use.....	5
2.1	Detailed user manual	7
3	Hazards and safety instructions.....	7
4	Warranty.....	18
5	Service	18
6	Transportation	18
6.1	Setting the device to transport mode	19
7	Disposal	20
7.1	Disposal of the device	20
7.2	Disposal of batteries.....	20
7.3	Disposal of premium filter bags.....	20
7.4	Disposal of the packaging.....	20
8	Technical Data	20
9	Manufacturer and Importer	24
10	Declaration of Conformity	24

1 Product overview



Overview of the Kobold VK7 cordless handheld vacuum cleaner, accessory heads and accessories

1 Kobold VK7 cordless handheld vacuum cleaner

4 Kobold HD7 hard floor brush

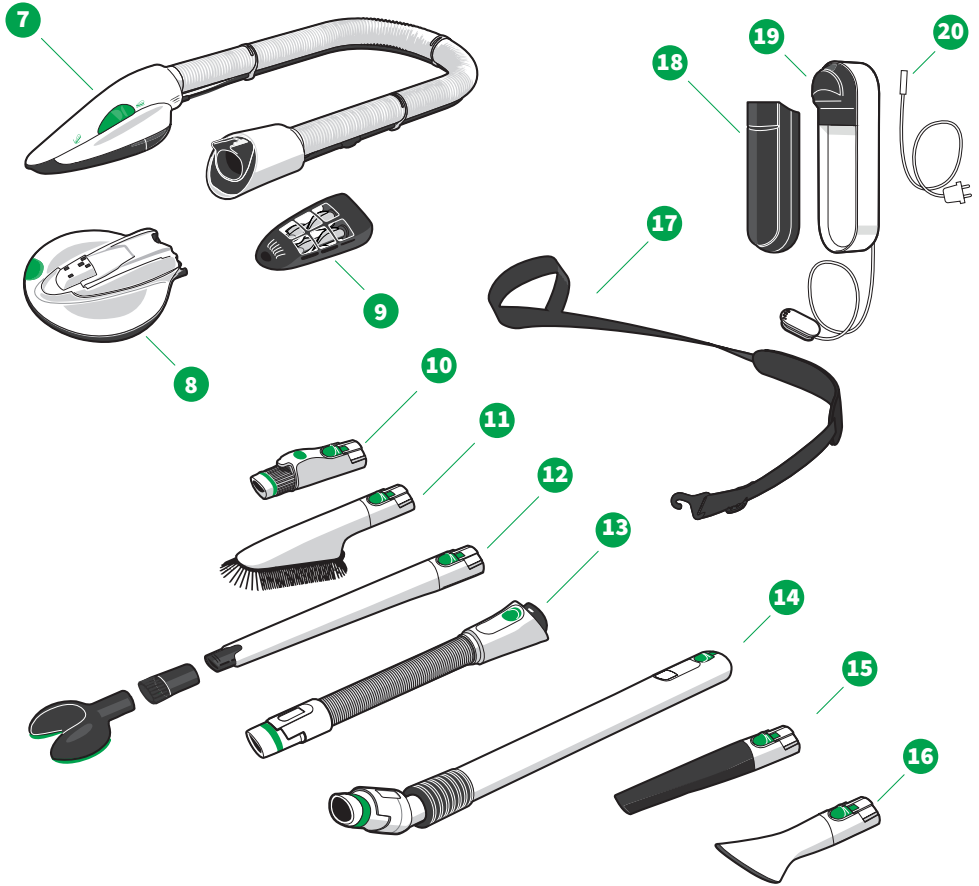
2 Kobold EB7 automatic electric floor brush

5 Kobold SC7 single charger

3 Kobold SP7 2-in-1 wet and dry cleaning attachment

6 Kobold CA7 charging adaptor for spare battery

Type and range of accessories included may vary. Accessories can be purchased separately. The diagrams in this instruction manual are meant to illustrate the functions of the device and its accessories. The illustrations shown may differ from the actual product with respect to detail and proportions. Drawings of plugs are for illustrative purposes only. The actual product may vary depending on the country.



Overview of the Kobold VK7 cordless handheld vacuum cleaner, accessory heads and accessories

7 Kobold PB7 electric upholstery brush	14 Kobold TR7 telescopic tube
8 Kobold MP7 mattress freshening accessory	15 Kobold CD7 car nozzle
9 Kobold MR7 mattress deep cleaning accessory	16 Kobold TD7 textile nozzle
10 Kobold AD7 adapter for previous accessories	17 Kobold SG7 shoulder strap
11 Kobold FD7 surface nozzle	18 Kobold BY7 battery
12 Kobold VD7 variable nozzle set	19 Kobold PC7 dual battery charger
13 Kobold SB7 extendable suction hose for accessories	20 Kobold mains charging cable for the Kobold PC7 dual battery charger

2 Intended use

Retain this document for future reference. It is an important part of the device and must be kept with it if you pass it on to someone else.

Use the device and accessories only for their intended purpose in order to prevent risks to you and other people and to prevent damage to the device or to other property and equipment.

The device is not intended to be used by children under 8 years of age. Cleaning and user maintenance should not be carried out by children under 8 years of age. This device is not intended to be used by persons (including children aged 8 years and above) with reduced physical, sensory or mental capabilities or lack of experience and knowledge unless they are supervised by a person responsible for their safety, or have been given instruction from this person concerning the safe use of the device and understand the hazards involved.

Children must not be allowed to play with the device or the chargers (including the cable and plug).

Cleaning and user maintenance must not be carried out by children aged 8 years and above without supervision.

This appliance may only be used for its intended purpose. No other use is permitted. The manufacturer bears no responsibility for damages resulting from improper use. If the appliance is subject to technical modifications, the warranty and liability for material defects shall be rendered invalid. The manufacturer's obligation to compensate on the basis of product liability and/or the dealer's obligation to compensate for material defects shall no longer apply if technical modifications are made to the product.

When working with the device, please observe all the accompanying documentation as well as the device display. The manufacturer accepts no liability for damages resulting from improper use.

The device complies with the safety regulations of the country in which it has been sold by an authorised Vorwerk organisation. If the device is used in another country, compliance with the local safety standards cannot be guaranteed. Vorwerk therefore assumes no liability for any resulting safety risks for the user.

Kobold VK7 cordless handheld vacuum cleaner

The Kobold VK7 cordless handheld vacuum cleaner is solely intended for removing dirt and dust within domestic areas and is only suitable for indoor use. This also includes use for typical household applications in shops, offices and similar work environments, agricultural operations, by customers in hotels, motels, bed and breakfast operations and similar living environments. The Kobold VK7 cordless handheld vacuum cleaner may only be used with the corresponding Kobold accessories.

Kobold EB7 automatic electric floor brush	Your Kobold EB7 automatic electric floor brush should be used solely for cleaning floors and carpets in domestic areas. The Kobold EB7 automatic electric floor brush may only be used in combination with a Kobold VK7 cordless handheld vacuum cleaner. The Kobold EB7 automatic electric floor brush is intended for use on different types of floors. The following types of carpet and flooring must not be cleaned with the automatic electric floor brush: fur rugs, flokati rugs, unsealed cork flooring, unsealed soft wood flooring, Belgian granite, delicate natural stone flooring, rough concrete flooring (e.g. washed concrete).
Kobold SP7 2-in-1 wet and dry cleaning attachment	<p>Your Kobold SP7 2-in-1 wet and dry cleaning attachment should be used solely for cleaning hard floors in domestic areas. The Kobold SP7 2-in-1 wet and dry cleaning attachment may only be used in combination with a Kobold VK7 cordless handheld vacuum cleaner. It is intended for use on various types of hard floors.</p> <p>It is suitable for use on floors that can be wet cleaned according to the manufacturer's recommendations. The following types of flooring must not be wet cleaned: untreated cork flooring, untreated tiled flooring, untreated soft wood flooring.</p>
Kobold HD7 hard floor brush	Your Kobold HD7 hard floor brush should be used solely for cleaning hard floors in domestic areas. The Kobold HD7 hard floor brush may only be used in combination with a Kobold VK7 cordless handheld vacuum cleaner. It is intended for use on the types of hard floors specified in the table Suitability for different types of floors.
Kobold PB7 electric upholstery brush	Your Kobold PB7 electric upholstery brush should be used solely for cleaning in domestic areas. The Kobold PB7 electric upholstery brush may only be used in combination with a Kobold VK7 cordless handheld vacuum cleaner. It is intended only for the care of upholstered furniture.
Kobold MP7/MR7 mattress cleaning set	The Kobold MP7/MR7 mattress cleaning set may only be used in combination with a Kobold VK7 cordless handheld vacuum cleaner and Kobold PB7 electric upholstery brush. It is intended only for the care of mattresses. It is not suitable for upholstered furniture.
Kobold accessories	The extendable Kobold SB7 suction hose for accessories, the Kobold FD7 surface nozzle, the Kobold VD7 variable nozzle, the Kobold TR7 telescopic tube, the Kobold CD7 car nozzle, the Kobold TD7 textile nozzle, the Kobold SG7 shoulder strap and the Kobold AD7 adapter for previous accessories may only be used with the Kobold VK7 cordless handheld vacuum cleaner. These accessories are suitable for a variety of cleaning tasks above floor level. The shoulder strap is intended exclusively for use by adults. The cordless handheld vacuum cleaner must be securely held or safely set down for all above-floor cleaning tasks.
Kobold PC7 dual battery charger	The Kobold PC7 dual battery charger may only be used with the Kobold VK7 modular cleaning system. The Kobold PC7 dual battery charger is intended for charging the Kobold VK7 cordless handheld

vacuum cleaner and one additional Kobold VK7 battery. The Kobold PC7 dual battery charger must not be stored or operated outdoors and must be protected from moisture.

Kobold SC7 single charger The Kobold SC7 single charger must only be used with the Kobold VK7 modular cleaning system. The Kobold SC7 single charger is intended for charging the Kobold VK7 cordless handheld vacuum cleaner. Using the Kobold CA7 charging adapter, a separate battery can be charged. The Kobold SC7 single charger must not be stored or operated outdoors and must be protected from moisture.

2.1 Detailed user manual

You can find the detailed user manual at



www.vorwerk.com/user-manual-Kobold-VK7

3 Hazards and safety instructions

Safety is an essential part of every Vorwerk product. However, the safety of this product can only be ensured if the product is used correctly and the safety warnings are observed.

WARNING

Risk of electric shock! Improper use of the device could cause an electric shock.

- Do not insert any sharp objects into the electrical contacts.
- Do not modify the electrical contacts.

- Risk of fire or electric shock!** **If incorrect repairs are performed on the device or corresponding charger/charging unit, this may cause a fire or electric shock.**
- Never attempt to repair the device yourself.
 - Repairs to electrical appliances may only be carried out by a Vorwerk customer service centre, a workshop authorised by Vorwerk or a person with similar qualifications in order to avoid hazards.
 - Defective parts may only be replaced by original replacement parts in order to avoid hazards.
 - In the event of damage to your device, contact Vorwerk customer service.
 - Only operate the charger/charging unit on a connection that has been properly installed by a qualified electrician.
 - Do not attempt to open the charger and repair it yourself. The charger has live parts inside and is not a serviceable component.
- Risk of electric shock!** **Carrying out cleaning when the charger is still plugged in could cause an electric shock.**
- Disconnect the charger and/or connection cable for the charger from the power socket before cleaning.
- Risk of fire or electric shock!** **If you run the device over exposed cables, it could cause a fire, or an electric shock on contact.**
- Never run your device over cables on the floor.
- Risk of electric shock!** **The power cord may be damaged by tensile stress.**
- Never pull the mains plug from the socket by the power cord, only by the plug.
 - Never carry the chargers by the connection cable.
- Risk of electric shock!** **If water gets into the electrical components, you could get an electric shock.**
- Never clean the charger or charging unit with water, liquid cleaners or a wet cleaning cloth.
 - Do not use the charger or charging unit in damp environments.
 - Never immerse the charger or charging unit in water or other liquids.
 - Never pour water over the charger or charging unit.
 - Do not hold the charger or charging unit under running water.
 - Do not touch the charger or charging unit with wet hands.

Risk of electric shock!	<p>Drilling mounting holes in the wall could result in an electric shock.</p> <ul style="list-style-type: none"> • When drilling (especially near a power socket or light switch), take particular care to ensure that you do not drill through an electric cable.
Explosion hazard!	<p>The improper handling of the battery or the device could cause an explosion.</p> <ul style="list-style-type: none"> • Only use original Vorwerk batteries that are compatible with your device. • Never attempt to open, repair or modify the battery. Defective batteries must be replaced by new original Vorwerk batteries. • Stop using the battery if it is damaged.
Explosion hazard!	<p>Improper use of cleaning agents may cause dangerous reactions.</p> <ul style="list-style-type: none"> • Do not use any cleaning agents that are oil-based, irritant, ignitable, inflammable or contain solvents or chlorine. • Do not add such cleaning agents to the tank in the 2-in-1 wet and dry cleaning attachment. • Never mix different cleaning agents and care products.
Risk of fire or explosion!	<p>The device could start to burn if it is exposed to heat, if the power supply unit is covered, or as a result of improper use.</p> <ul style="list-style-type: none"> • The device and all its accessories (especially the battery) must never be placed on an open fire or exposed to an external heat source. • Stop using the device and all its accessories (especially the battery) if they have been dropped on the floor and show visible signs of damage or appear to be faulty. • Do not short-circuit the battery under any circumstances, e.g. as a result of metal objects coming into contact with the battery terminals. • Make sure that the power supply unit is not covered.
Risk of fire or explosion!	<p>Charging non-rechargeable batteries can cause a fire or explosion!</p> <ul style="list-style-type: none"> • Only use the original Vorwerk battery that is compatible with your device.
Risk of fire or explosion!	<p>If burning or readily ignitable substances should enter the interior of the device, this may cause fire or an explosion.</p> <ul style="list-style-type: none"> • Do not vacuum hot ash or burning cigarette ends. • Do not vacuum explosive or readily inflammable substances.

Fire hazard!	<p>The use of an incompatible charger can damage the battery and cause a fire.</p> <ul style="list-style-type: none"> • Only use the device with original Kobold accessories. • To charge the battery/device, only use the removable power unit (charger/charging unit) that was supplied with the device.
Fire hazard!	<p>If water gets inside the battery, it could cause a fire.</p> <ul style="list-style-type: none"> • Never clean the battery with water, liquid cleaners or a wet cleaning cloth. • Keep the battery away from water and other liquids.
Fire hazard!	<p>The Kobold cordless handheld vacuum cleaner and its accessories are not compatible with Vorwerk mains-powered vacuum cleaners or their accessories.</p> <ul style="list-style-type: none"> • Never try to operate the cordless handheld vacuum cleaner or its accessories with the mains-powered vacuum cleaner series or their electrically powered accessories.
Fire hazard!	<p>Coarse contaminants on the contacts could be conductive and result in a short circuit. A short circuit could cause a fire.</p> <ul style="list-style-type: none"> • Disconnect the charging device from the power and clean the charging plug with a dry or, if necessary, slightly damp cloth.
Risk of fire!	<p>If the device or battery are accidentally triggered or activated when in transit, this could cause a build-up of heat, which could lead to a fire.</p> <ul style="list-style-type: none"> • Follow the instructions in the manual to ensure safe transportation.
Risk of choking!	<p>Small parts may be accidentally swallowed and cause choking.</p> <ul style="list-style-type: none"> • Regularly check that the seam on the green nose of the cleaning cloth on the 2-in-1 wet and dry cleaning attachment is in good condition and replace it if the green nose is coming loose. • Keep small parts such as fragrance chips out of the reach of children.
Risk of burns!	<p>You may sustain burns from hot or boiling water.</p> <ul style="list-style-type: none"> • Do not pour hot or boiling water into the tank of the 2-in-1 wet and dry cleaning attachment.
Risk due to magnetism!	<p>The cartridge for the freshener kit contains a magnet. Magnets can affect pacemakers and internal defibrillators.</p> <ul style="list-style-type: none"> • Keep the magnet away from pacemakers, internal defibrillators and other active implants. • Alert the people affected.



CAUTION

Risk of burns!

If water enters the charging plug, it could heat up.

- Never clean the charging plug with water, liquid cleaners or a wet cleaning cloth.

Risk of injury due to negative pressure!

Vacuuming of skin or hair can cause injury.

- Do not vacuum any body parts or hair.
- Do not vacuum in the vicinity of children or pets.

Risk of injury from moving parts!

Moving parts (such as the rotating brushes or oscillating cloth holder) could cause injury.

- Always switch the device off before all retrofitting, cleaning and maintenance work.
- Disconnect the accessory head from the device before performing retrofitting, cleaning or maintenance work on the accessory head.
- Stay clear of moving parts.
- Never reach into the moving parts.
- Do not operate the electric upholstery brush without an attachment.
- Do not remove mattress-cleaning attachments while the electric upholstery brush is in operation.

Risk of injury from moving parts!

The suction shoe on the hard floor brush is pulled back to its original position by a spring and could injure you.

- Stay clear of the suction shoe as it springs back into place.
- Do not use force to turn the hard floor brush further than it should go, especially when the bristle plate has been removed.

Risk of falling and injury!

If you exert excessive pressure on the cordless handheld vacuum cleaner, you could lose your balance and fall.

- Always place the device and the accessory head on a level surface when in the standby position.
- Never use the device to support yourself.
- Never stand on the accessory heads.

Risk of injury if device is left running unattended!

If the device is left unattended, it could injure others.

- Before leaving the device unattended, switch it off using the on/off switch on the cordless handheld vacuum cleaner.

Risk of contact with dangerous substances!

Leaked electrolyte from batteries and rechargeable batteries can cause injuries.

- Do not touch leaked electrolyte or electrolyte residues from leaking batteries or rechargeable batteries without skin or eye protection.
- Leaking electrolyte must not come into contact with skin, eyes or mucous membranes.
- In case of accidental contact, immediately wash your hands and flush the eyes or mucous membranes with plenty of clean water.
- Keep away from leaking electrolyte vapours and ensure that there is good ventilation.
- If irritation persists or the electrolyte has come into contact with the eyes or mucous membranes, seek medical advice.
- Clothing and textiles that have come into contact with leaked electrolyte or electrolyte residues must be thoroughly washed immediately or disposed of.
- Leaked electrolyte, electrolyte residues as well as leaking batteries and rechargeable batteries are flammable. Keep them away from fire and heat.

Risk of injury due to sharp fragments of plastic!

Broken plastic can have sharp edges and you could injure yourself.

- Do not use the device if plastic components have been damaged due to being knocked or dropped.
- Protect yourself from fragments with sharp edges.

Risk of injury from debris flying out!

Debris that is being vacuumed could fly out and cause injury.

- Avoid abruptly placing the accessory head on loose, coarse debris (e.g. glass shards), especially at eye level.
- Avoid moving the accessory head sideways onto loose, coarse debris (e.g. glass shards).
- Switch off the accessory head before lifting it.
- Do not clean with the 2-in-1 wet and dry cleaning attachment at eye level (e.g. on stairs or landings).

Risk of injury!

The 2-in-1 wet and dry cleaning attachment is only suitable for use on floors. If the device is used on ceilings or walls, it may detach from the vacuum cleaner and fall onto the user.

- Only use the 2-in-1 wet and dry cleaning attachment to clean horizontal surfaces.
- Never use the 2-in-1 wet and dry cleaning attachment vertically or overhead.

Loss of suitability for allergy sufferers and risk of damage from improper use!

Unsuitable or damaged filter material will not retain fine, allergenic particles.

- Only use the original Kobold products that are intended to be used with this device.
- Do not reuse spent Kobold premium filter bags.
- Only use the device with an original Kobold premium filter bag installed.

! NOTICE

Risk of damage from improper use!

If the device is not in perfect working order, it could cause damage.

- Only use the original Vorwerk products that are intended to be used with this device.
- Do not operate the device if the device itself or the power cord are damaged or if the device is not fully assembled.

Risk of damage from improper use!

Improper use of the charger could damage the device.

- To charge the device, only use the original charger and/or charging unit and mains cable from Vorwerk that are designed to be used with this product.
- Only operate the charger and/or charging unit with the alternating current voltage and mains frequency stated on the type plate.

Risk of damage from improper use!

Improper use of the device may damage it.

- Do not block the air outlets during use under any circumstances. Keep the device free of contaminants that reduce airflow.

Risk of damage to the battery!

Incorrect use of the battery could damage it.

- Fully charge the device at least once a year in order to prevent deep discharge, which can shorten the life of the battery.

Risk of damage to the battery!

Extreme heat or cold shortens the service life and/or can cause damage to the batteries.

- Do not expose the device to fire, heat, direct sunlight or excessive temperatures.
- Do not place the device near a heat source (oven, heater or hot radiator).
- Always comply with the ambient temperatures specified in the technical data for storage and operation.

Risk of damage to the device!

Moisture inside the device can damage it.

- Do not vacuum liquids or damp dirt.
- Do not vacuum damp doormats or carpets.
- Do not use the device in damp environments (in wet bathrooms or outdoor areas, etc.) or in places where there is a risk that the device could come into contact with liquids.
- Never pour water over the device or hold it under running water. Never immerse the device in water or other liquids.
- Do not store the device outdoors.
- Keep the device protected from moisture.

Risk of damage due to incorrect cleaning!

The device could get damaged if not cleaned correctly.

- Never clean the device with water, liquid cleaners or a wet cleaning cloth.
- Never wet-clean the roller brush. Use a dry or slightly damp cloth if necessary. The roller brush is not dishwasher safe or waterproof.
- Do not use abrasive cleaning pads, scouring agents or aggressive liquids such as benzene or acetone to clean the device.
- Do not use disinfectant to clean the device.

Risk of damage from improper use!

Damp in the filter area can damage the device.

- If the filter area becomes damp, dry it before using it again.
- Replace the premium filter bag and dry the motor protection filter.

Risk of damage from improper use!

A damp motor protection filter can cause damage.

- If the motor protection filter is damp, let it dry out in a warm place for 24 hours before putting it back into the device.

Risk of damage from improper use!

If the device is not in good working order, it could cause damage.

- Only use the device with the motor protection filter installed.

Risk of damage from improper use!

The improper use of the device could cause damage to the floor.

- Avoid working with the electrically powered accessory heads in one specific spot for a prolonged period of time.
- To prevent damage to the floor, clean delicate hard floors and carpets with the automatic electric floor brush on a low roller-brush speed or with the roller brushes deactivated.
- Do not move the automatic electric floor brush diagonally or sideways across the floor, as this could permanently mark the floor.
- Avoid vacuuming up loose rugs and fringes or deactivate the roller brushes.
- Please refer to the cleaning and care information issued by the floor manufacturer.

Risk of material damage from incorrect storage!

The 2-in-1 wet and dry cleaning attachment could get damaged if the interior or exterior are exposed to moisture for a prolonged period.

- Never leave a wet cloth in the 2-in-1 wet and dry cleaning attachment when storing it.
- When storing the device, never leave residual fluid in the tank.
- Empty the tank fully after each use.

Material damage from fitting the tank incorrectly!

If the tank on the 2-in-1 wet and dry cleaning attachment is not handled correctly, it could cause damage.

- Avoid using force when inserting and removing the tank.

Risk of damage to the floor! The improper use of the 2-in-1 wet and dry cleaning attachment could cause damage to the floor.

- Never use the 2-in-1 wet and dry cleaning attachment without the cleaning cloth.
- Never work on the same spot for more than 10 seconds.
- Never leave the 2-in-1 wet and dry cleaning attachment standing on the floor with a wet cleaning cloth for more than 30 seconds as this could cause damage to delicate floors.
- Never dampen the cleaning cloth by hand. Moisture may only be applied to the cleaning cloth by the 2-in-1 wet and dry cleaning attachment. The cloth could otherwise become too wet.
- For delicate floors (such as floors which are not permanently sealed, e.g. oiled cork, oiled parquet, coated, oiled stoneware), try the device out in an inconspicuous area first to prevent damage to the floor.
- If floors that are extremely sensitive to moisture become too wet, wipe dry using a dry Parquet or Dry cleaning cloth and the vacuum cleaner.
- If the 2-in-1 wet and dry cleaning attachment gets jammed or caught on something, it should be switched off immediately in order to prevent damage.

Material damage due to incorrect cleaning agents! The improper use of cleaning agents when operating the 2-in-1 wet and dry cleaning attachment can cause damage.

- Only use original Kobold cleaning agents.
- Never use acid cleaning agents (e.g. vinegar-based cleaner) or highly alkaline cleaning agents (e.g. chlorine bleaching).

Damage to the floor from sharp-edged objects! Sharp fragments underneath the cleaning cloth could cause damage to the floor.

- Before switching on the device, make sure that there are no small stones, granulates (e.g. cat litter) or other pointed or sharp-edged objects under the cleaning cloth.

Risk of damage from applying moisture incorrectly! Adding moisture to the dry cleaning cloth could cause damage to the device.

- Do not apply moisture when using the Dry cleaning cloth.

Material damage from fitting the cloth holder incorrectly!	<p>If the cloth holder on the 2-in-1 wet and dry cleaning attachment is not handled correctly, it could cause damage.</p> <ul style="list-style-type: none"> • When attaching the cleaning cloth to the cloth holder, always ensure that the cloth is fastened evenly. Make sure that you do not attach the cleaning cloth to the cloth holder at an angle. • Avoid using force when inserting and removing the cloth holder.
Risk of damage from using Lavenia on unsuitable surfaces!	<p>If Lavenia mattress cleaning powder is used incorrectly, it could cause damage.</p> <ul style="list-style-type: none"> • Test the colour fastness of the mattress against Lavenia in an inconspicuous spot before application.
Risk of damage to mattresses!	<p>If the mattress cleaning set is used incorrectly, it could damage your mattresses.</p> <ul style="list-style-type: none"> • Avoid working with the device in one specific spot for a prolonged period of time (max. 5 seconds). • Do not vacuum mattresses with the suction shoe of the electric upholstery brush. Use only the mattress deep cleaning accessory to avoid damage to mattresses. • Use Lavenia and the mattress cleaning set only on mattresses. The mattress cleaning set is not suitable for use on other upholstery fabrics or furniture, and may damage delicate materials. • Use the mattress freshening accessory with the corresponding nubbed disc exclusively for mattress cleaning. • Do not press the device firmly onto the mattress. Doing so could cause damage to your mattress and the device.
Risk of damage from improper use!	<p>Unsuitable carpet cleaning agents can damage the device.</p> <ul style="list-style-type: none"> • Only use Kobosan Active for cleaning carpets, and only vacuum it up once it is completely dry.
Risk of damage from improper use!	<p>Using the nozzle set (Kobold accessories) incorrectly could damage surfaces.</p> <ul style="list-style-type: none"> • Do not use nozzles from the nozzle set on smooth or polished surfaces.
Risk of damage due to magnetism!	<p>The cartridge for the freshener kit contains a magnet.</p> <ul style="list-style-type: none"> • Keep credit cards, electronic storage media and other objects that are sensitive to magnetic fields away from them.

Meaning of safety symbols



Safety warning message indicating the severity of the potential hazard



Reference to damage to property or equipment



Device has an earth connection for functional reasons



Device of protection class II



Indoor use only



Read manual before charging



To charge the battery/device, only use the removable power unit (charger/charging unit) that was supplied with the device.

4 Warranty

Any warranty services can be found in the order note or purchase contract.

5 Service

For more information, please speak to our UK & Ireland Customer Care team, either by calling +44 330 6600 834 (Monday to Friday 09:00 – 17:00) or sending an email to info@vorwerk.co.uk.

6 Transportation

WARNING



Risk of fire!

If the device or battery are accidentally triggered or activated when in transit, this could cause a build-up of heat, which could lead to a fire.

- Follow the instructions in the manual to ensure safe transportation.

The device contains lithium-ion batteries, which are subject to dangerous goods regulations. You can transport the batteries by road (e.g. in your vehicle) without having to meet further requirements. Information on the number of cells and energy of the cells or battery can be found on the battery's data plate.

The device is delivered in transport mode and is therefore already secured against activation. This means that it can be safely shipped in the original packaging without the removal of the battery. Nevertheless, please observe points 1, 5 and 6. If you have started operating the device, transport mode is deactivated.

If the batteries are shipped by a third party (e.g. air freight or courier), you must comply with special requirements with regard to packaging and labelling.

1. Only ship batteries if the battery housing is undamaged. If you are in any doubt as to whether the battery is undamaged, do not ship the battery. If in doubt, consult a dangerous goods expert.
2. If shipping by air freight, the battery must have a charge of 30% or less.
3. If possible, set the battery to **transport mode** [▶ 19] using the cordless handheld vacuum cleaner, as it must not switch on when in transit.
4. If this is not possible, remove the battery, cover exposed contacts and pack the battery separately from the device in such a way that it cannot move inside the packaging. To obtain suitable original packaging, please contact customer service.
5. Always check with your shipping provider how to pack and label the package. This will depend on whether you are shipping the battery on its own or with the device, and whether the package is to be transported by air.
6. Ensure that you also comply with any additional national and international regulations.

6.1 Setting the device to transport mode

If you are going to transport your cordless handheld vacuum cleaner, set it first to transport mode. This ensures that it does not switch on accidentally.

You can only ship the cordless handheld vacuum cleaner with the battery installed if the battery is in transport mode.

1. Make sure that the cordless handheld vacuum cleaner is not connected to the charger and is switched off.
2. Press and hold the on/off switch and one of the two +/- buttons at the same time for 2 seconds until the battery status is shown on the display.
3. Press and hold the on/off switch and boost button at the same time for 6 seconds until all the elements on the display light up.
4. After no more than 1 second, press and hold the on/off switch and boost button at the same time **again** for 6 seconds until all the elements on the display are flashing.
5. After no more than 1 second, press and hold the on/off switch and boost button at the same time **again** for 6 seconds until an inverted *JL* appears on the display.

⇒ *The battery is now in transport mode and may be shipped.*

You can deactivate transport mode again by charging the cordless handheld vacuum cleaner.



7 Disposal

7.1 Disposal of the device



This symbol means that electrical and electronic appliances may not be disposed of in household waste. You can return your old electrical appliances to a municipal collection point free of charge.

7.2 Disposal of batteries

The lithium-ion battery contains substances that can be harmful to the environment. Before scrapping the device, the battery must be removed. Only dispose of batteries that are completely empty. The contacts on the battery must not come into contact with metal under any circumstances and should be covered with insulating tape prior to disposal.



The crossed-out bin symbol depicted on a battery or on a rechargeable battery means that the battery/rechargeable battery must not be put into household waste.

The separate collection of old batteries and rechargeable batteries is intended to enable correct recycling and to prevent negative effects on health and the environment.

Batteries and rechargeable batteries must not be disposed of in household waste. You are legally required to return all used batteries and rechargeable batteries.

7.3 Disposal of premium filter bags

Dispose of premium filter bags in household waste.

7.4 Disposal of the packaging

The packaging is an important part of the product. It protects our devices against damage in transit and reduces the risk of a fault. For that reason, we cannot avoid using packaging. The original packaging provides the best protection against damage in transit if you need to send your device to our customer service department.

If you want to dispose of the packaging, please use regional collection points such as waste-paper and recycling containers.

8 Technical Data

Kobold VK7 cordless handheld vacuum cleaner

Safety symbols



Kobold VK7 cordless handheld vacuum cleaner



Housing	High-quality, recyclable, thermoformed plastic			
Motor	Maintenance-free BLDC motor, with max. 95,000 rpm			
Nominal output	400 W in Boost mode			
Voltage	28.8 V or 29.6 V (depending on cell type)			
Charger input voltage	220-240 V alternating current, 50/60 Hertz (automatic adjustment)			
Max. negative pressure	max. negative pressure 112 hPA (level 4 – 89,000 rpm)			
Max. volume flow	max. volume flow 27 l/s (empty bag without accessory head) (level 4 – 89,000 rpm)			
Premium filter bag volume	0.8 l			
Weight	approx. 2.3 kg (cordless handheld vacuum cleaner without accessory head)			
Dimensions	Height: approx. 22 cm (approx. 21 cm with the rotating handle closed) Width: approx. 14 cm Length: approx. 55 cm (approx. 93 cm with the rotating handle open)			
Sound power level	77 dB(A) re 1 pW (for Kobold VK7 cordless handheld vacuum cleaner with Kobold EB7 automatic electric floor brush on carpet)			
Battery	Rechargeable lithium-ion battery Type designation: Battery Pack ... Capacity/energy: < 100 Wh Technical data: See battery type plate The battery meets the requirements of the UN Manual of Tests and Criteria, Part III, UN 38.3.			
Battery charge time	approx. 2 hours			
Permissible ambient temperature	5 – 35 °C			
Information on connectivity	2.4 GHz	2400 - 2483.5 MHz	< 10 dBm	Bluetooth® 5.1 Low Energy

The Bluetooth® word mark and logos are registered trademarks owned by Bluetooth SIG, Inc. Any use of these word marks and logos by Vorwerk Elektrowerke GmbH & Co. KG is under licence.



Kobold SC7 single charger

Name or trade mark of the manufacturer, company registration number and address	Vorwerk Elektrowerke GmbH & Co. KG HRB 7852 Mühlenweg 17-37 42270 Wuppertal, Germany			
Type designation	SC7 ...			
Input voltage	220-240V AC			
Input AC frequency	50/60 Hz (automatic adjustment)			
Output voltage	37V DC			




Kobold SC7 single charger

Output current	1.3 A
Output power	48.1 W
Average active efficiency	> 87.77 %
Efficiency at low load (10 %)	> 78 %
Power consumption at zero load	< 100 mW
Safety symbols	 

Kobold PC7 dual battery charger

Name or trade mark of the manufacturer, company registration number and address	Vorwerk Elektrowerke GmbH & Co. KG HRB 7852 Mühlenweg 17-37 42270 Wuppertal, Germany
Type designation	PC7
Input voltage	220-240V AC
Input AC frequency	50/60 Hz (automatic adjustment)
Output voltage	37V DC
Output current	1.3 A
Output power	48.1 W
Average active efficiency	> 87.77 %
Efficiency at low load (10 %)	> 75 %
Power consumption at zero load	0 W
Safety symbols	 

Kobold EB7 automatic electric floor brush

Safety symbols	  
Housing	High-quality, recyclable, thermoformed plastic
Motor	Maintenance-free DC motor at approx. 9400 rpm
Nominal output	80 W
Voltage	28.8 V
Weight	approx. 1.65 kg
Roller brushes	2 replaceable rotating brushes
Working width	Approx. 25 cm
Rotational speed of the brush	4700 rpm or 1550 rpm or 0 rpm
Dimensions	approx. 25 cm x 44 cm x 8 cm

Kobold EB7 automatic electric floor brush

Sound power level	77 dB(A) re 1 pW (with Kobold VK7 cordless handheld vacuum cleaner on carpet) 80 dB(A) re 1 pW (with Kobold VK7 cordless handheld vacuum cleaner on a hard floor)
-------------------	--

Kobold SP7 2-in-1 wet and dry cleaning attachment

Safety symbols



Housing	high-quality, recyclable plastic
Motor	Maintenance-free brushless DC brush motor
Nominal output	55 W
Voltage	28.8 V
Weight	approx. 3.5 kg (without cloth and with an empty tank)
Dimensions	Height: approx. 10 cm (with horizontal joint) Width: approx. 32 cm Length: approx. 38 cm (with horizontal joint)
Tank volume	approx. 300 ml
Sound power level	76 dB(A) re 1 pW (with Kobold VK7 cordless handheld vacuum cleaner on a hard floor)

Kobold HD7 hard floor brush

Weight	approx. 950 g
Maximum nozzle width	Approx. 270 mm
Nozzle height (with horizontal pivot)	Approx. 75 mm
Sound power level	78 dB(A) re 1pW (with Kobold VK7 cordless handheld vacuum cleaner on a hard floor)

Kobold PB7 electric upholstery brush with Kobold MP7 mattress freshening accessory and Kobold MR7 mattress deep cleaning accessory

Safety symbols



Housing	High-quality recyclable plastic, with suction shoe made of shatter-proof polyamide
Motor	Maintenance-free DC motor with direct transmission
Brush mechanism	2 counter-rotating roller brushes with approx. 4000 rpm, maintenance-free bearings
Nominal output	35 watts
Voltage	28.8 V
Weight	Kobold PB7 electric upholstery brush: approx. 1200 g Kobold MP7 mattress freshening accessory: approx. 440 g Kobold MR7 mattress deep cleaning accessory: approx. 150 g

Kobold PB7 electric upholstery brush with Kobold MP7 mattress freshening accessory and Kobold MR7 mattress deep cleaning accessory

Dimensions	Kobold PB7 electric upholstery brush (with tube): Height approx. 10 cm; width approx. 8 cm; length approx. 154 cm Kobold MP7 mattress freshening accessory: Height approx. 6 cm; width approx. 18 cm; length approx. 20 cm Kobold MR7 mattress deep cleaning accessory: Height approx. 7 cm; width approx. 8 cm; length approx. 18 cm
Sound power level	82 dB(A) re 1 pW (with Kobold VK7 cordless handheld vacuum cleaner based on EN 60704-2-1 on upholstery fabric) 85 dB(A) re 1 pW (with Kobold VK7 cordless handheld vacuum cleaner with MP7 mattress freshening accessory on a mattress) 82 dB(A) re 1 pW (with Kobold VK7 cordless handheld vacuum cleaner with MR7 mattress deep cleaning accessory on a mattress)

9 Manufacturer and Importer

Manufacturer

Vorwerk Elektrowerke GmbH & Co. KG
Mühlenweg 17-37
42270 Wuppertal
Germany

Importer

Vorwerk UK Limited
Ashurst Manor
Church Lane
Ascot
SL5 7DD

10 Declaration of Conformity

Vorwerk Elektrowerke GmbH & Co. KG hereby declares that the radio equipment type Kobold VK7 cordless handheld vacuum cleaner is in compliance with the Directive 2014/53/EU. The full text of the EU declaration of conformity is available at:

<https://www.vorwerk-group.com/de/home/meta/eu-konformitaetserklaerung>

and <https://www.vorwerk-group.com/en/home/meta/ec-declaration-of-conformity>



www.vorwerk.com/user-manual-Kobold-VK7

