

# VM7

User manual

**kobold**  
VORWERK

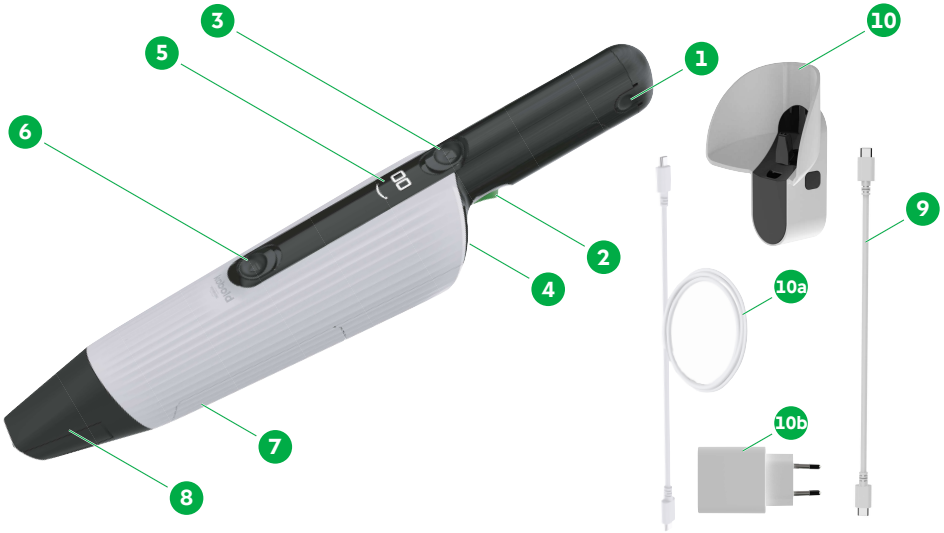
# Table of contents

<b>1</b>	<b>Before you start .....</b>	<b>3</b>			
<b>2</b>	<b>Product overview .....</b>	<b>3</b>			
<b>3</b>	<b>Intended use .....</b>	<b>4</b>			
<b>4</b>	<b>For your safety .....</b>	<b>5</b>			
4.1	Classification of safety warning messages .....	5	9.2	Removing and cleaning the dust chamber .....	17
4.2	Hazards and safety instructions .....	6	9.3	Cleaning the filter .....	17
4.3	Your obligations .....	9	9.3.1	Removing the filter .....	17
<b>5</b>	<b>First use .....</b>	<b>9</b>	9.3.2	Cleaning the pre-filter .....	18
<b>6</b>	<b>Operation .....</b>	<b>10</b>	9.3.3	Cleaning the filter .....	18
6.1	Charging the mini vacuum cleaner .....	10	9.3.4	Re-inserting the pre-filter ....	18
6.2	Display .....	10	9.3.5	Installing the filter .....	18
6.3	Switching on and off .....	11	9.4	Inserting the airumo fragrance chip .....	19
6.4	Setting the 2-in-1 nozzle .....	11	9.5	Changing the battery .....	19
6.5	Storing the mini vacuum cleaner .....	12	9.6	Replacing the 2-in-1 nozzle .	19
6.6	Preparing for transport mode .....	12	<b>10</b>	<b>Troubleshooting .....</b>	<b>20</b>
<b>7</b>	<b>Battery running times .....</b>	<b>12</b>	<b>11</b>	<b>Disposal .....</b>	<b>22</b>
<b>8</b>	<b>Wall mount .....</b>	<b>13</b>	11.1	Disposal of the device .....	22
8.1	About the wall mount .....	13	11.2	Disposal of batteries .....	22
8.2	Before installation .....	13	<b>12</b>	<b>Warranty .....</b>	<b>22</b>
8.3	Wall mounting .....	14	<b>13</b>	<b>Service .....</b>	<b>23</b>
8.4	Installing the cable .....	15	<b>14</b>	<b>Technical data .....</b>	<b>23</b>
8.5	Completing installation .....	15	14.1	Manufacturer and Importer.	23
8.6	Charging the mini vacuum cleaner in the wall mount .....	15			
<b>9</b>	<b>Care and maintenance .....</b>	<b>16</b>			
9.1	Emptying the dust chamber .	16			
9.1.1	Emptying into a waste bin .....	16			
9.1.2	Emptying with the VK7 cordless handheld vacuum cleaner .....	16			

# 1 Before you start

Congratulations on the purchase of your new Kobold device. Read the instruction manual carefully before using the device and accessories for the first time.

# 2 Product overview



Kobold VM7 handheld vacuum cleaner	6 Dust chamber release button
1 Kobold BM7 battery	7 Dust chamber with quick release function
2 Power button with boost function	8 2-in-1 nozzle
3 2-in-1 nozzle button	9 USB-C® cable (1m)
4 USB-C® port	10 Kobold CM7 wall mount* with 10a USB-C® cable* and 10b USB-C® charger*
5 Display	

The images shown are for illustrative purposes and may differ from the actual product. Drawings of plugs are for illustrative purposes only. \*available separately

### 3 Intended use

Use the device and accessories only for their intended purpose in order to minimise risks to you and other people and to minimise damage to the device or to other property and equipment.

The Kobold VM7 mini vacuum cleaner is solely intended for removing dirt and dust within domestic areas and is only suitable for indoor use.

The device is not intended to be used by children under 8 years of age. Cleaning and user maintenance should not be carried out by children under 8 years of age. This device is not intended to be used by persons (including children aged 8 years and above) with reduced physical, sensory or mental capabilities or lack of experience and knowledge unless they are supervised by a person responsible for their safety, or have been given instruction from this person concerning the safe use of the device and understand the hazards involved.

Children must not be allowed to play with the device or the chargers (including the cable and plug).

Cleaning and user maintenance must not be carried out by children aged 8 years and above without supervision.

This appliance may only be used for its intended purpose. No other use is permitted. The manufacturer bears no responsibility for damages resulting from improper use. If the appliance is subject to technical modifications, the warranty and liability for material defects shall be rendered invalid. The manufacturer's obligation to compensate on the basis of product liability and/or the dealer's obligation to compensate for material defects shall no longer apply if technical modifications are made to the product.

When working with the device, please observe all the accompanying documentation as well as the device display. The manufacturer accepts no liability for damages resulting from improper use.

The device complies with the safety regulations of the country in which it has been sold by an authorised Vorwerk organisation. If the device is used in another country, compliance with the local safety standards cannot be guaranteed. Vorwerk therefore assumes no liability for any resulting safety risks for the user.

## 4 For your safety

Safety is an essential part of every Vorwerk product. However, the safety of this product can only be ensured if the product is used correctly and all safety instructions are followed.

### 4.1 Classification of safety warning messages

The safety warning messages in this manual are highlighted by safety symbols and signal words. The symbol and signal word indicate the severity of the potential hazard.

#### Classification of safety warning messages

The safety warning messages that precede each action are shown as follows:

#### WARNING



Type and source of hazard

Explanation of type and source of hazard/consequences

- Measures to prevent hazard

#### Meaning of signal words

WARNING	Risk of death or serious injury if hazard is not avoided.
CAUTION	Risk of minor injury if hazard is not avoided.
NOTE	Material damage if hazard is not avoided.

#### Meaning of safety symbols



Indoor use only



To charge the battery/device, only use the removable power unit.

## 4.2 Hazards and safety instructions



### WARNING

- |  |  |
|--|--|
| <b>Risk of fire!</b>                   | <p>If the device accidentally switches on in transit, it could cause a build-up of heat or even a fire.</p> <ul style="list-style-type: none"><li>• To ensure safe transportation, set the device to transport mode beforehand.</li></ul>  |
| <b>Risk of fire!</b>                   | <p>If water gets inside the battery, it could cause a fire.</p> <ul style="list-style-type: none"><li>• Never clean the battery with water, liquid cleaners or a wet cleaning cloth.</li><li>• Keep the battery away from water and other liquids.</li></ul>   |
| <b>Risk of fire or electric shock!</b> | <p>If incorrect repairs are performed on the device and corresponding charger, this may cause a fire or electric shock.</p> <ul style="list-style-type: none"><li>• Never attempt to repair the device yourself.</li><li>• Only allow repairs to electrical appliances to be carried out by a Vorwerk customer service centre, a workshop authorised by Vorwerk or a person with similar qualifications in order to avoid hazards.</li><li>• Only replace defective parts with original spare parts in order to avoid hazards.</li><li>• In the event of damage to your device, contact Vorwerk customer service.</li><li>• Do not attempt to open the charger and repair it yourself. The charger has live parts inside and is not a serviceable component.</li></ul> |
| <b>Risk of electric shock!</b>         | <p>Improper use of the device could cause an electric shock.</p> <ul style="list-style-type: none"><li>• Do not insert any sharp objects into the electrical contacts.</li><li>• Do not modify the electrical contacts.</li><li>• In the event of damage, contact Vorwerk customer service.</li></ul>  |
| <b>Risk of electric shock!</b>         | <p>If water gets into the electrical components, you could get an electric shock.</p> <ul style="list-style-type: none"><li>• Only clean the device with a dry cloth.</li><li>• Do not use the charger in damp environments.</li><li>• Do not touch the charger with wet hands.</li></ul>  |

<b>Risk of electric shock!</b>	<p>If non-original chargers are used, it cannot be guaranteed that the intended protection against electric shock is provided.</p> <ul style="list-style-type: none"> <li>• To charge the device, use only the original Vorwerk charger (removable power unit) that is available for this device.</li> </ul>
<b>Risk of fire or explosion!</b>	<p>If burning or readily ignitable substances should enter the interior of the device, this may cause fire or an explosion.</p> <ul style="list-style-type: none"> <li>• Do not vacuum hot ash or burning cigarette ends.</li> <li>• Do not vacuum explosive or readily inflammable substances.</li> </ul>
<b>Risk of fire or explosion!</b>	<p>Charging non-rechargeable batteries can cause a fire or explosion!</p> <ul style="list-style-type: none"> <li>• Only use the original Vorwerk battery that is compatible with your device.</li> </ul>
<b>Risk of fire or explosion!</b>	<p>The device could start to burn if you expose it to heat, cover the power supply unit or use it incorrectly.</p> <ul style="list-style-type: none"> <li>• The device and all its accessories (especially the battery) must never be placed on an open fire or exposed to an external heat source.</li> <li>• Stop using the device and all its accessories (especially the battery) if they have been dropped on the floor and show visible signs of damage or appear to be faulty.</li> <li>• Do not short-circuit the battery under any circumstances, e.g. as a result of metal objects coming into contact with the battery terminals.</li> <li>• Make sure that the power supply unit is not covered.</li> </ul>
<b>Explosion hazard!</b>	<p>The improper handling of the battery or the device could cause an explosion.</p> <ul style="list-style-type: none"> <li>• Only use original Vorwerk batteries that are compatible with your device.</li> <li>• Never attempt to open, repair or modify the battery. Defective batteries must be replaced by new original Vorwerk batteries.</li> <li>• Stop using the battery if it is damaged.</li> </ul>
<b>Risk of electric shock!</b>	<p>Drilling mounting holes in the wall could result in an electric shock.</p> <ul style="list-style-type: none"> <li>• When drilling (especially near a power socket or light switch), take particular care to ensure that you do not drill through an electric cable.</li> </ul>

### Risk of choking!

Small parts may be accidentally swallowed and cause choking.

- Keep small parts such as fragrance chips out of the reach of children.



### CAUTION

#### Risk of injury due to negative pressure!

Suctioning the skin or hair can cause injury.

- Do not vacuum any body parts or hair.
- Do not vacuum in the vicinity of children or pets.

#### Risk of contact with dangerous substances!

Leaked electrolyte from batteries and rechargeable batteries can cause injuries.

- Do not touch leaked electrolyte or electrolyte residues from leaking batteries or rechargeable batteries without skin and eye protection.
- Leaking electrolyte must not come into contact with skin, eyes or mucous membranes.
- In case of accidental contact, immediately wash your hands and flush the eyes or mucous membranes with plenty of clean water.
- Keep away from leaking electrolyte vapours and ensure that there is good ventilation.
- If irritation persists or the electrolyte has come into contact with the eyes or mucous membranes, seek medical attention.
- Clothing and textiles that have come into contact with leaked electrolyte or electrolyte residues must be thoroughly washed immediately or disposed of.
- Leaked electrolyte, electrolyte residues as well as leaking batteries and rechargeable batteries are flammable. Keep them away from fire and heat.



### NOTICE

#### Risk of damage to the device!

Moisture inside the device may damage it.

- Never clean your device with water or damp cleaning agents.
- Store the device so that it is protected from damp.

<b>Risk of damage to the device!</b>	<p>If the device is not in perfect working order, it could cause damage.</p> <ul style="list-style-type: none"> <li>• Only use original Vorwerk products.</li> <li>• Do not operate the device if the device itself or the power cord is damaged or if the device is not fully assembled.</li> <li>• Only use the mini vacuum cleaner with an original filter unit installed.</li> </ul>
<b>Risk of damage to the battery!</b>	<p>Heat or cold shorten the service life and/or can cause damage to the batteries.</p> <ul style="list-style-type: none"> <li>• Always comply with the ambient temperatures specified in the technical data for storage and operation.</li> </ul>
<b>Risk of damage to the battery!</b>	<p>Incorrect use of the battery could damage it.</p> <ul style="list-style-type: none"> <li>• Fully charge the device at least once a year in order to prevent deep discharge, which can shorten the life of the battery.</li> </ul>
<b>Risk of damage from improper use!</b>	<p>Using the nozzle incorrectly could damage surfaces.</p> <ul style="list-style-type: none"> <li>• Do not use the device on glossy or polished surfaces.</li> </ul>

### 4.3 Your obligations

To ensure that your device and Vorwerk accessories operate correctly, please follow the guidelines below:

1. Follow the instructions in the manual and all accompanying documentation.
2. Keep the manual in a place where it can be easily accessed, should you need to refer to it.
3. Ensure that any damage is repaired immediately. For assistance with this, please contact [Service](#) [▶ 23].

## 5 First use

The mini vacuum cleaner is almost ready for use and comes fully assembled. It is set to [transport mode](#) [▶ 12].

- [Briefly charge the mini vacuum cleaner to wake it up](#) [▶ 10].  
⇒ *A smiley will appear on the display for a few moments.*

## 6 Operation







### 6.1 Charging the mini vacuum cleaner



1. Charge your mini vacuum cleaner via the USB-C® port (1).
  - ⇒ A smiley will appear on the display (2) for 2-3 seconds to confirm that the charging process has started.
  - ⇒ After that, a total of three arcs will appear on the display to indicate that the device is charging. The three arcs will light up one after the other on the display for approx. 20 seconds.
2. To check the charge level on the mini vacuum cleaner, briefly press the green power button (3).
  - ⇒ 1-3 arcs will light up on the display [▶ 10] as the charge level increases. If the three arcs on the display are no longer lighting up in sequence and are permanently lit, the battery is fully charged. If the battery has not yet reached full charge, the three arcs will continue to light up in sequence for approx. 20 seconds.
3. You can also charge your mini vacuum cleaner in the wall mount, which is available separately. [Find out how to do this here \[▶ 15\]](#).

### 6.2 Display

The status of the mini vacuum cleaner is shown on the display.

					
Charging is starting or appears every time you start the device	Battery fully charged	Battery charge medium	Battery charge low	Battery almost empty	An error has occurred, see <a href="#">Troubleshooting [▶ 20]</a>

## 6.3 Switching on and off



To start vacuuming, you must **always** disconnect your mini vacuum cleaner from the charging cable.

1. Make sure that the mini vacuum cleaner is not connected to the charging cable.
2. Press the green power button (1) to start the device in normal mode.  
⇒ *The current charge level [▶ 10] will be shown on the display.*
3. Do you need more power? Then hold down the green power button (1).  
⇒ *The mini vacuum cleaner will operate on the louder boost setting for as long as the green power button is held down.*

The device is louder on boost than on normal mode. You are vacuuming more dirt and more stubborn dirt. This uses more power, which is why the battery does not last as long as on normal mode. Boost is activated for as long as you hold down the green power button, but this is not shown separately on the display.

- Press the green power button (1) again to switch off the mini vacuum cleaner.

## 6.4 Setting the 2-in-1 nozzle

### Spot setting

The 2-in-1 nozzle has the standard nozzle width on the spot setting. This allows you to vacuum narrow spaces more easily.

### Surfaces setting

The 2-in-1 nozzle is open on the surfaces setting. This makes it easier to vacuum wide areas.



### Changing the setting

1. Slide the 2-in-1 nozzle button (1) forward to switch from the standard to the wide setting.  
⇒ *The wings on the 2-in-1 nozzle will spring open.*
2. Press the wings together with your hand to return to the standard nozzle width.

## 6.5 Storing the mini vacuum cleaner

We recommend charging your mini vacuum cleaner after each use. It will then be ready to use next time. When not in use, it can be left connected to the charging cable or in the [wall mount \[▶ 13\]](#) and stored.

## 6.6 Preparing for transport mode

If you want to transport or ship your mini vacuum cleaner, you must ensure that it does not switch on accidentally.

### Option 1: Removing the battery

1. You can prevent the mini vacuum cleaner from accidentally switching on by [removing the battery \[▶ 19\]](#). Take care to ensure that no moisture, dirt or foreign objects get inside the handle.
2. Cover exposed contacts on the battery with insulating tape.

### Option 2: Activating transport mode

1. Ensure that the mini vacuum cleaner battery is discharged to a sufficiently low level so that the current battery charge is only 1 bar.
2. [Connect the mini vacuum cleaner to the charger. \[▶ 10\]](#)
3. Hold down the green power button for 4 seconds.
  - ⇒ *Within one second, the current charge level will be shown on the display. You can only set the mini vacuum cleaner to transport mode when the battery charge indicator shows only one arc.*
  - ⇒ *Within two to three seconds, a code will appear on the display. After this, everything occurs automatically and you do not need to do anything else.*
  - ⇒ *Once transport mode is activated, the smiley and all the arc symbols will appear on the display. These will go out one after another until the display turns black.*
4. To take your mini vacuum cleaner out of transport mode, [charge it \[▶ 9\]](#).

## 7 Battery running times

The mini vacuum cleaner has varying running times depending on the suction setting you select.

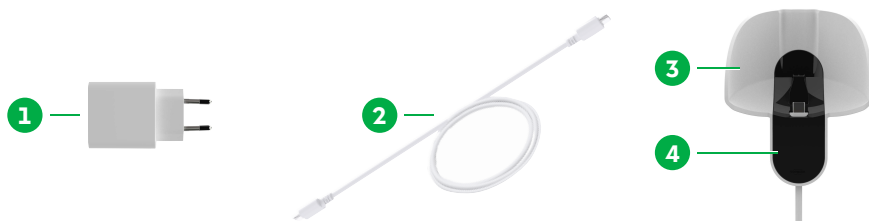
Mode	Battery running time
Normal	approx. 22 min.
Boost	approx. 15 min.

The stated operating times are typical operating times. They have been determined using a battery in new condition and at a room temperature of 21 °C. Actual operating times may differ (on a customised cleaning setting, for example). The operating times given are approximate values that depend on the type of use and the ambient conditions. Low and high temperatures can, for example, shorten the operating time of the battery.

The battery ages during the period of use, and the operating time of the battery diminishes during this time. The operating times have been determined using a fully charged battery.

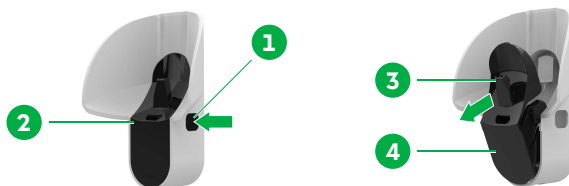
## 8 Wall mount

### 8.1 About the wall mount



The wall mount is available as an optional accessory for your mini vacuum cleaner. The wall mount consists of a charger (1), USB-C® cable (2), white mounting plate (3) and black cover (4).

### 8.2 Before installation



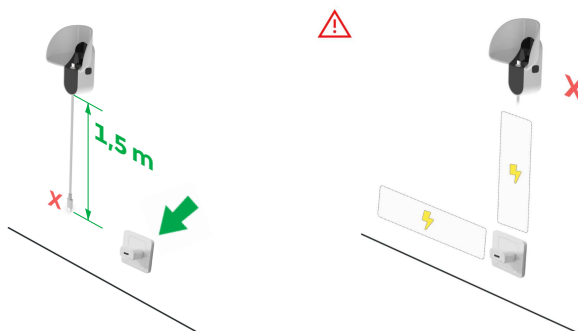
You need to disassemble the wall mount prior to installation:

1. Push in the black clasps on the left and right (1+2) of the cover and, at the same time, pull the cover out of the white mounting plate by the socket (3).
2. Put the cover (4) to one side.

**Selecting fasteners** Screws and dowels are not included. When selecting these, ensure that they are appropriate for the wall conditions.

## 8.3 Wall mounting

### Finding a suitable location

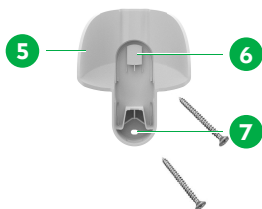


A suitable location for the wall mount will meet the following criteria:

1. It should be near a power socket but never directly next to, above or below a power socket, as there are very likely to be electrical cables there. Always consider the layout of your home and check where electrical cables are located.
2. There should be enough space above and adjacent to it to insert the mini vacuum cleaner.

### Installing the mounting plate

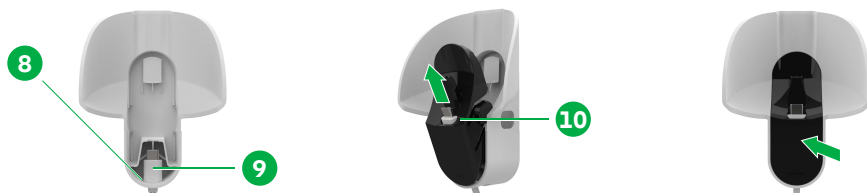
To install the wall mount, follow the instructions below:



1. Hold the mounting plate (5) in your chosen location and mark the holes (6+7). Make sure that the holes are aligned directly above one another.
2. Now select two screws and dowels that are suitable for the wall conditions.
3. Drill the holes and screw the mounting plate firmly into place.



## 8.4 Installing the cable



1. Feed the USB-C<sup>®</sup> charging cable through the designated opening (8) on the wall mount from underneath. To do this, slide the USB-C<sup>®</sup> charging cable, connector (9) first, into the wall mount.
2. Now take the cover and slide the connector on the USB-C<sup>®</sup> charging cable into the designated socket (10).
3. Insert the cover, together with the installed cable, into the mounting plate, making sure that you do not catch the cable.

## 8.5 Completing installation

1. Insert the USB-C<sup>®</sup> charging cable into the charger.
2. Connect it to the power supply.
3. Pay attention to the specified voltage for the charger.
4. You can now place your mini vacuum cleaner into the wall mount, where it can be charged and stored. Check that the display on your mini vacuum cleaner switches on.

## 8.6 Charging the mini vacuum cleaner in the wall mount

The mini vacuum cleaner can be charged in the wall mount and safely stored there at any time.

1. Place the mini vacuum cleaner into the wall mount from above.
2. To remove the mini vacuum cleaner, lift it out of the mount from above.



## 9 Care and maintenance

### 9.1 Emptying the dust chamber

The mini vacuum cleaner is highly effective at collecting dust and debris, which is why it is important that you regularly empty the dust chamber. For instructions, see [Emptying into a waste bin](#) [▶ 16] and [Emptying with the VK7 cordless handheld vacuum cleaner](#) [▶ 16].

#### 9.1.1 Emptying into a waste bin



1. Hold your mini vacuum cleaner over a waste bin.
2. Slide the release button (1) towards you and loosely hold the flap on the dust chamber with your other hand.  
⇒ *The dust chamber will open.*
3. Empty the dust chamber directly into the waste bin.
4. If you would like to add a fine fragrance to your home as you vacuum, you can [insert an airumo fragrance chip](#) [▶ 19].
5. Close the dust chamber again.

#### 9.1.2 Emptying with the VK7 cordless handheld vacuum cleaner

As an alternative, you can vacuum the dust chamber using your Kobold VK7 cordless handheld vacuum cleaner. To do this, follow the instructions below:

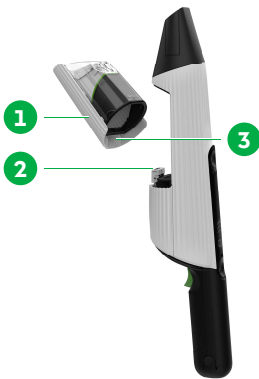


1. Place the Kobold VK7 cordless handheld vacuum cleaner on a table.
2. Open the flap (2) at the back of the mini vacuum cleaner (3) with your fingernail.

- ⇒ *The flap for emptying the mini vacuum cleaner will open. You can simply let it hang down as it is secured by a flexible rubber lip.*
- 3. Connect the opening (4) directly to the connector or suction hose on your Kobold VK7 cordless handheld vacuum cleaner.
- 4. Switch on your Kobold VK7 cordless handheld vacuum cleaner for 5 seconds on the max. power setting.
- 5. Once you have finished, close the flap (2).

## 9.2 Removing and cleaning the dust chamber

You can completely remove the dust chamber from the device to give it a thorough clean or to take out the filter. To do this, follow the instructions below:

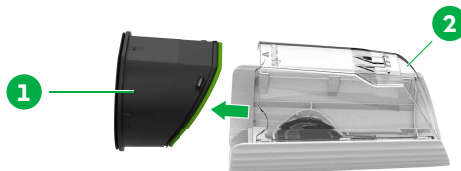


1. **Open the dust chamber** [▶ 16] over a waste bin.
2. Pull the dust chamber (1) upwards and away from the mini vacuum cleaner until its magnetic holder (2) disengages.
3. If necessary, you can wipe the inside of the dust chamber clean with a damp cloth.
4. It is important that you dry the dust chamber thoroughly before re-inserting it.
5. **Check the filter and clean it, if necessary.** [▶ 17]
6. If you would like to add a fine fragrance to your home as you vacuum, you can **insert an airumo fragrance chip.** [▶ 19]
7. To re-insert the dust chamber, dock it onto its magnetic holder (3) and close it completely.

## 9.3 Cleaning the filter

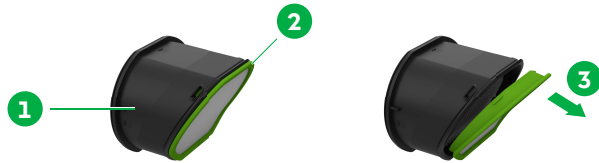
The filter is an important component of the mini vacuum cleaner. From time to time, you will need to clean the filter to remove fine dust, etc. It is very important that you always re-insert the filter correctly before using the mini vacuum cleaner.

### 9.3.1 Removing the filter



1. **Remove the dust chamber** [▶ 17].
2. Remove the filter (1) from the dust chamber (2).

### 9.3.2 Cleaning the pre-filter



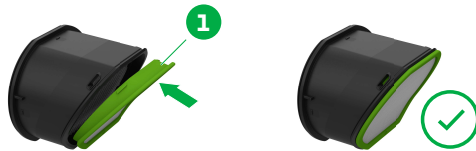
1. Detach the pre-filter (2) from the filter (1) by pulling it forwards and away from the filter (3).
2. Clean the pre-filter.

### 9.3.3 Cleaning the filter

1. Now clean the filter (1) by removing debris, such as hair.
2. To release any dust from the filter, carefully tap it, e.g. against the inside of a bin. Alternatively, you can vacuum it using another vacuum cleaner, such as the Kobold VK7 cordless handheld vacuum cleaner.

**Important!** Never clean the filter with water as this will damage it.

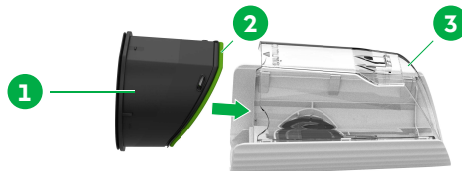
### 9.3.4 Re-inserting the pre-filter



- Put the pre-filter (1) back on the filter by pressing it onto the filter.

### 9.3.5 Installing the filter

**Important!** Please do not forget to put the filter back in. If you operate your mini vacuum cleaner without a filter, you can damage it.

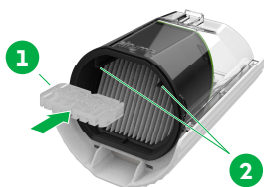


1. Only ever insert the filter (1) into the dust chamber (3) with the pre-filter (2) installed.

2. Put the correctly assembled dust chamber (including filter) back into the mini vacuum cleaner [▶ 17].

## 9.4 Inserting the airumo fragrance chip

The mini vacuum cleaner will release a fresh scent while vacuuming when used in combination with an airumo fragrance chip. This is a Vorwerk accessory that you can use with many Kobold products. To insert an airumo fragrance chip, follow the instructions below:

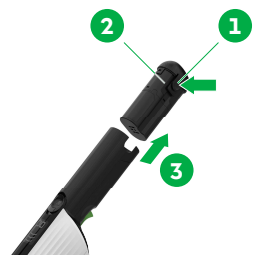


1. Empty the dust chamber [▶ 16].
2. Completely remove the dust chamber. [▶ 17]
3. Slide the airumo fragrance chip (1) into the holder (2) on the filter of your mini vacuum cleaner.
4. Put the dust chamber back in and close it. [▶ 17]

You should change the airumo fragrance chip after 6 to 8 weeks.

## 9.5 Changing the battery

If you need to change the battery, you should proceed as follows:



1. Press the two indentations (1+2) on the left and right of the battery at the same time, while extracting the battery from the handle (3).
2. To re-insert it, slide the battery back into the handle until the lock engages.

The battery only fits into the handle in one direction, so you cannot insert it the wrong way round. Never force the battery into the handle.


## 9.6 Replacing the 2-in-1 nozzle

You can replace the 2-in-1 nozzle if it is damaged or badly scratched. The 2-in-1 nozzle is not designed for frequent replacement, so you should only replace it if it is in need of repair.

1. Rotate the 2-in-1 nozzle anti-clockwise.
2. Pull the 2-in-1 nozzle away.

## 10 Troubleshooting

Things do not always go as expected. If you find that your device is not working properly, it could be due to one of the following reasons:

Fault	Possible cause and rectification
There is a small circle on the display.	<p>The battery is too hot and cannot be charged.</p> <ul style="list-style-type: none"><li>– Allow the battery to cool down.</li></ul> <p>Did you switch on the mini vacuum cleaner while it was on the charger?</p> <ul style="list-style-type: none"><li>– You can only switch on the mini vacuum cleaner when it is not connected to the charger.</li></ul>
	<p>The battery may be empty.</p> <ul style="list-style-type: none"><li>– <a href="#">Charge the mini vacuum cleaner. [▶ 10]</a></li></ul> <p>The mini vacuum cleaner may not have charged correctly.</p> <ul style="list-style-type: none"><li>– Make sure that the charger and the mini vacuum cleaner are connected, and that the plug socket is working properly.</li></ul> <p>Did you switch on the mini vacuum cleaner while it was on the charger?</p> <ul style="list-style-type: none"><li>– You can only switch on the mini vacuum cleaner when it is not connected to the charger.</li></ul> <p>The mini vacuum cleaner may be in transport mode.</p> <ul style="list-style-type: none"><li>– <a href="#">To disable transport mode, briefly charge the mini vacuum cleaner. [▶ 12]</a></li></ul> <p>Have none of the above helped?</p> <ul style="list-style-type: none"><li>– <a href="#">Remove and re-insert the battery. [▶ 19]</a></li></ul>
The mini vacuum cleaner is not charging.	<p>The contact between the charger, mini vacuum cleaner and charging cable may be impaired, or the plug socket may not be working correctly.</p> <ul style="list-style-type: none"><li>– Make sure that the charger with the charging station and the mini vacuum cleaner are connected, and that the plug socket is working.</li></ul> <p>The battery may be damaged.</p> <ul style="list-style-type: none"><li>– <a href="#">Replace the battery. [▶ 19]</a></li></ul>

Fault	Possible cause and rectification
The mini vacuum cleaner is not picking up or not picking up as well as it used to, and is making unusual noises.	<p>The 2-in-1 nozzle may be clogged.</p> <ul style="list-style-type: none"> <li>– Switch off the mini vacuum cleaner and unclog the 2-in-1 nozzle.</li> </ul> <p>The dust chamber may not be closed correctly.</p> <ul style="list-style-type: none"> <li>– <b>Insert the dust chamber correctly into the mini vacuum cleaner. [▶ 17]</b></li> </ul> <p>The dust chamber may be full.</p> <ul style="list-style-type: none"> <li>– <b>Empty the dust chamber [▶ 16].</b></li> </ul> <p>The filter may be dirty.</p> <ul style="list-style-type: none"> <li>– <b>Clean the filter. [▶ 17]</b></li> <li>– Replace the filter if it is very dirty or damaged.</li> </ul>
Dust is escaping from the device.	<p>The dust chamber may not be closed correctly.</p> <ul style="list-style-type: none"> <li>– Insert the dust chamber correctly into the mini vacuum cleaner.</li> </ul> <p>The filter may not be installed correctly in the dust chamber.</p> <ul style="list-style-type: none"> <li>– <b>Insert the filter correctly into the dust chamber. [▶ 17]</b></li> <li>– Never use your mini vacuum cleaner without the filter correctly installed as this can damage it.</li> </ul>
It is not possible to insert the battery.	<p>The battery only fits into the handle one way round.</p> <ul style="list-style-type: none"> <li>– You should therefore never try to push the battery back in with force.</li> <li>– <b>Check that you inserted it the right way round. [▶ 19]</b></li> <li>– Also check that the handle is undamaged and that there are no foreign objects inside.</li> </ul>
I cleaned the filter with water.	<p>The filter is not designed to be cleaned with water.</p> <ul style="list-style-type: none"> <li>– Replace the filter immediately.</li> <li>– Do not use your mini vacuum cleaner with a filter that has been cleaned with water. This can damage the device.</li> <li>– Never use the mini vacuum cleaner without the filter. This can damage the device.</li> </ul>
The mini vacuum cleaner will not go into the wall mount correctly.	<p>You may not have used the original charging cable that was supplied with the wall mount.</p> <ul style="list-style-type: none"> <li>– Use only the cable supplied when charging in the wall mount.</li> </ul>
The charging cable cannot be correctly inserted into the wall mount.	<p>You may not have used the original charging cable that was supplied with the wall mount.</p> <ul style="list-style-type: none"> <li>– Use only the cable supplied when charging in the wall mount.</li> </ul>

Fault	Possible cause and rectification
The cover on the mounting plate is coming loose or tilting forward.	<p>You may have tried to pull the mini vacuum cleaner forwards out of the mount using too much force.</p> <ul style="list-style-type: none"> <li>– Press the mount back into the mounting plate.</li> <li>– Always lift the mini vacuum cleaner out of the holder from above.</li> </ul> <p>You may have knocked the device in the mount side on.</p> <ul style="list-style-type: none"> <li>– Press the mount back into the mounting plate.</li> </ul>

If the problem cannot be resolved, please contact Vorwerk Service [▶ 23].

## 11 Disposal

### 11.1 Disposal of the device



This symbol means that electrical and electronic appliances may not be disposed of in household waste. You can return your old electrical appliances to a municipal collection point free of charge.

### 11.2 Disposal of batteries

The lithium-ion battery contains substances that are harmful to the environment and must be removed before the appliance is scrapped. Only dispose of fully discharged batteries and insulate the contacts with adhesive tape to prevent short circuits.



The crossed-out bin symbol on a battery or rechargeable battery indicates that batteries/rechargeable batteries must not be put into household waste. Separate collection is intended to ensure environmentally friendly recycling and prevent damage to the environment and health. You are obliged to dispose of used batteries (including rechargeable batteries) correctly.

For countries where this is required by law, Vorwerk commissions publicly approved organisations to take back and properly dispose of its batteries via a collection network. You can return our batteries free of charge to our stores, as well as to municipal collection centres and retailers that are part of this collection network.

## 12 Warranty

Any warranty services can be found in the order note or purchase contract.

## 13 Service

For more information, please speak to our UK & Ireland Customer Care team, either by calling +44 330 6600 834 (Monday to Friday 09:00 – 17:00) or sending an email to [info@vorwerk.co.uk](mailto:info@vorwerk.co.uk).

## 14 Technical data

### **Kobold VM7 Mini Vacuum Cleaner**

Housing	High-quality, recyclable, thermoformed plastic
Motor	Maintenance-free DC motor at approx. 26,500 rpm
Input power	75 W
Max. air velocity	23.2 m/s on normal; 29.1 m/s on boost
Weight	approx. 840 g (without wall mount and charger)
Dimensions (W x H x L)	approx. 8.7 cm x 9.2 cm x 45.9 cm
Noise emission	< 80 dbA in Eco mode
Battery	Rechargeable lithium-ion battery Type designation: BM7...
Battery charge time	approx. 120 min.
Permissible ambient temp.	5 – 35 °C
Charger input voltage	100 – 240 V
Charger output voltage	5 V / 3 A; 9 V / 2.22 A; 12 V / 1.67 A (automatic adjustment)
Charger type	CM7 Charger – B

### 14.1 Manufacturer and Importer

#### Manufacturer

Vorwerk Elektrowerke GmbH & Co. KG  
42270 Wuppertal  
Germany

#### Importer

Vorwerk UK Limited  
Ashurst Manor  
Church Lane  
Ascot  
SL5 7DD

